



A COMPANY OF STPI GROUP

ED1 – 1 Pole Double Break

General Characteristics

No. of Poles:	1 Form Z (1PDT, DMDB)
Dimensions:	1.025" x 0.525" x 1.010" (26.0 x 13.3 x 25.7) mm
Weight:	0.10 lbs Max (46.0 grams)

Switching Characteristics

Operate Time @ +25°C	
-With AC Coil:	20 ms. Max
-All Others:	10 ms. Max
Release Time @ +25°C	
-With AC Coil:	50 ms. Max
-All Others:	6 ms. Max
Bounce Time:	5 ms. Max
Mechanical Life:	400,000 Cycles

Environmental Characteristics

Temperature Range:	-70°C to +125°C
Vibration (Sinusoidal)	30g 10-3,000 Hz
Shock (any axis)	200g, 6 ms
Seal:	Hermetic (1x10 ⁻⁸ atm cm ³ /s)

Electrical Characteristics

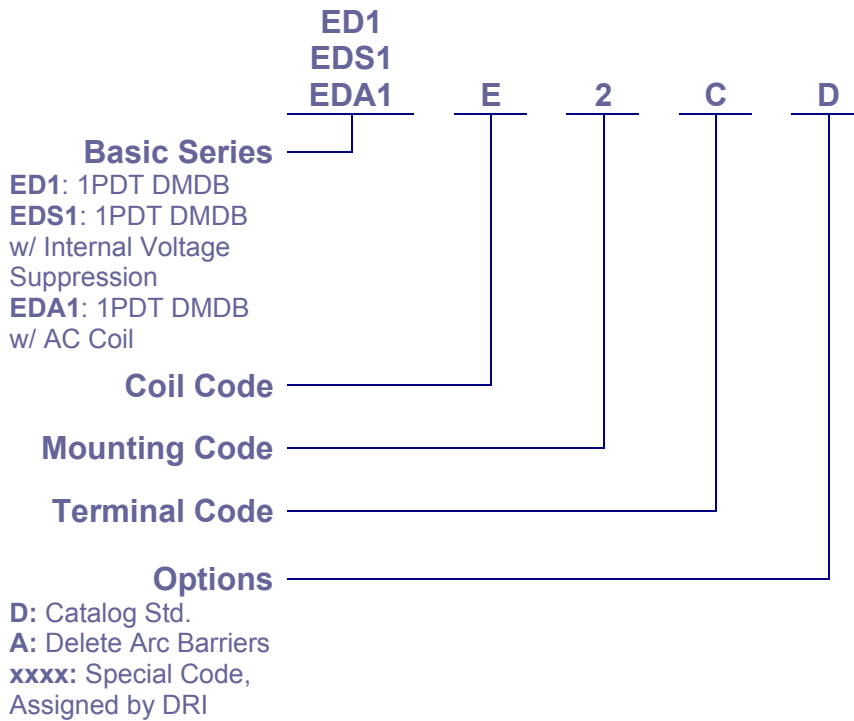
Contact Voltage Drop (at rated resistive load)		
-Initial:	150 mV Max.	
-After Guaranteed Life:	175 mV Max.	
Dielectric Strength @ Sea Level	Coil to Case	All Other Points
-Initial @ 60 Hz:	1,250 Vrms	1,250 Vrms
-After Life Test @ 60 Hz:	1,250 Vrms	1,250 Vrms
Insulation Resistance		
-Initial:	1000 MΩ Min, @ 500 Vdc	
-After Life Tests:	500 MΩ Min, @ 500 Vdc	

Contact Rating (Amps)

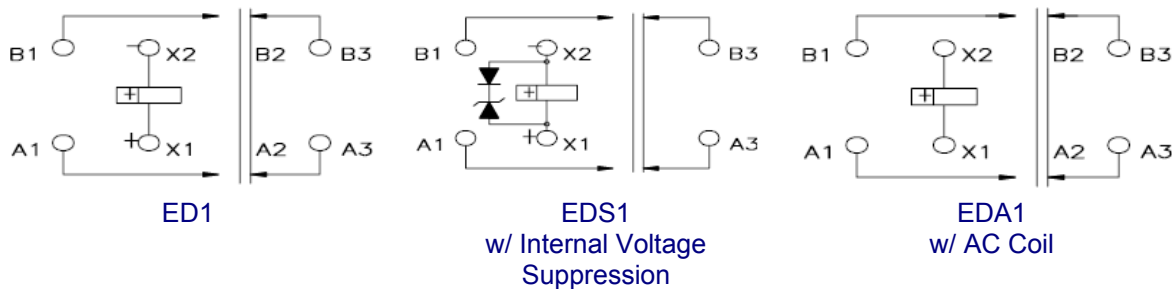
Type of Load (High Level)	Cycles x 10 ³	115 Vac				
		28 Vdc	400 Hz 1 Phase	50/60 Hz 1 Phase	400 Hz 3 Phase	50/60 Hz 3 Phase
Resistive	100	15	15	9	15	9
Inductive	20	15	15	N/A	15	N/A
Inductive	10	N/A	N/A	9	N/A	9
Motor	100	10	10	5	10	5
Lamp	100	5	5	3	N/A	N/A

Note: 115 Vac 50/60 Hz life reduced to 10,000 Cycles for all load types

Part Numbering



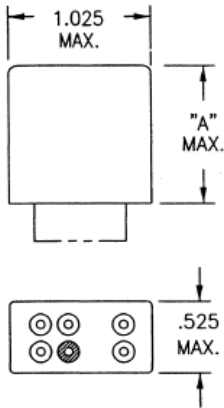
Circuit Diagram



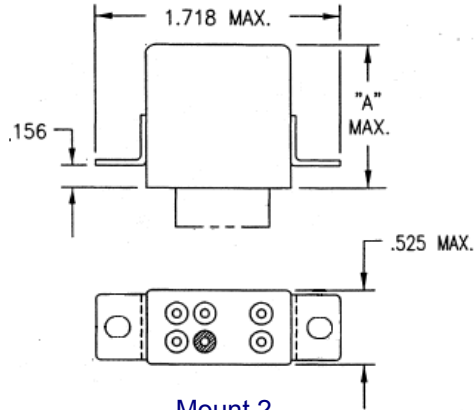
Coil Code

COIL CODE	Vdc						Vac	
	A	B	D	E	G	J	L	N
Nominal coil voltage:	6	12	26.5	28	48	110	115 - 400 Hz	115 - 50/400 Hz
Maximum pick-up voltage @ +125°C:	3.9	7.7	18	18.7	31	70	95	95
Maximum pick-up voltage @ +25°C:	3.2	6.5	13.5	14	24	55	75	75
Minimum drop-out voltage @ -70°C:	0.2	0.5	1.2	1.5	2	5	5	5
Coil resistance (Ω \pm 10% @ +25°C):	20	80	320	320	955	5000	-	-
Max. Coil Transient Suppression (EDS1 Only) Vdc:	-42	-42	-42	-42	-100	-227	N/A	N/A

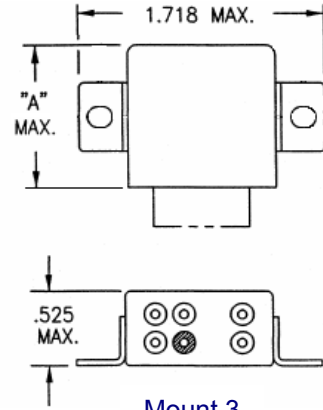
Mounting Code



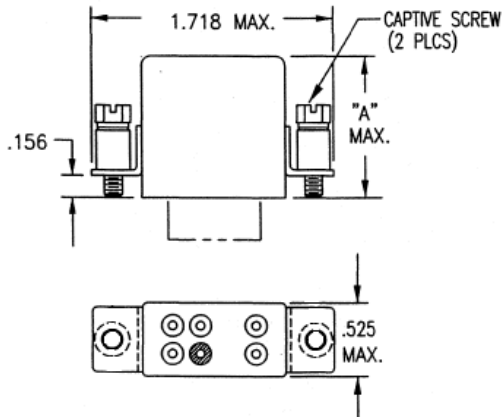
Mount 1



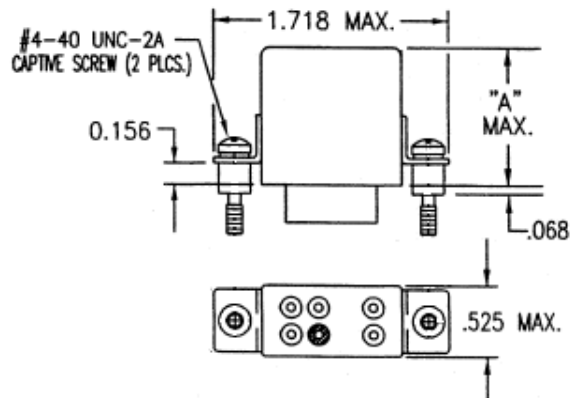
Mount 2



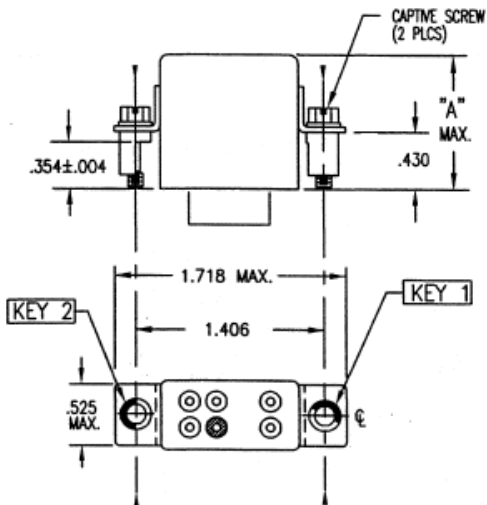
Mount 3



Mount 8: M3
Mount C: #4-40 UNC






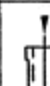








Mount G

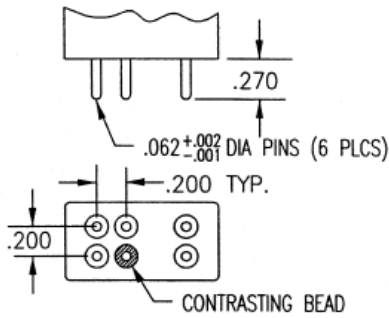


Mount A: M3
Mount B: #4-40 UNC

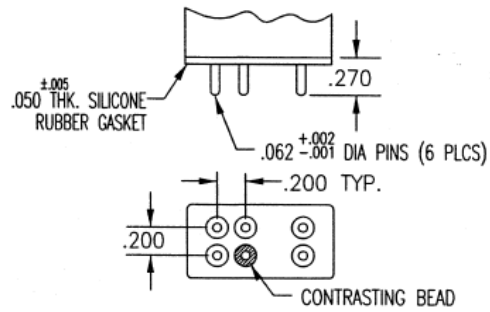
KEYING POSITIONS

U	V	W	X	Y	Z
					
					
0°	60°	120°	180°	240°	300°

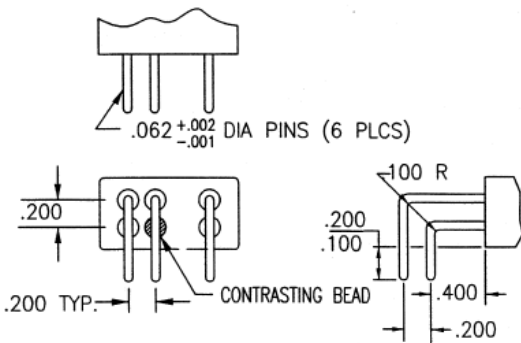
Terminal Code



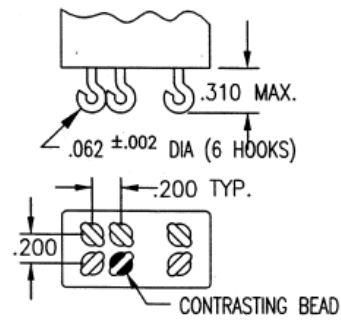
Terminal A: Tin Plated
Terminal B: Solder Dipped



Terminal C: Gold Pins (DC)



Terminal D: Tin Plated
Terminal E: Solder Dipped



Terminal H: Tin Plated
Terminal J: Solder Dipped