



A COMPANY OF STPI GROUP

REBM410

Military Specified

Meets MIL-PRF-83726

General Characteristics

Number of Poles:	4 Form C (4PDT)
Dimensions:	1.025" x 1.025" x 1.51" (26.0mm x 26.0mm x 38.4mm)
Weight:	0.19 lb. (86.2 grams)

Switching Characteristics

Timing Action	Delay on Operate, Fixed
Sheet 35:	Delay on Release, Fixed
Sheet 36:	Select from 0.1 to 600 seconds
Time Delay:	±10%, add ±10 ms for timing less than 1 sec.
Timing Accuracy:	50 ms Max.
Recycle Time:	400,000 Cycles
Mechanical Life:	

Environmental Characteristics

Temperature Range:	-55°C to +125°C
Vibration (Sinusoidal):	30g, 10-3,000 Hz
Shock (any axis):	100g, 6 ms
Seal:	Hermetic (1x10 ⁻⁸ atm cm ³ /s)

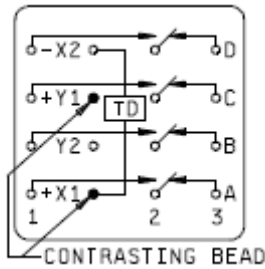
Electrical Characteristics

Contact Voltage Drop (at rated resistive load)	
-Initial:	150 mV Max.
-After Guaranteed Life:	175 mV Max.
Dielectric Strength, Initial @ 60 Hz	
Coil to Case @ Sea Level:	1,000 Vrms
All Other Points @ Sea Level:	1,000 Vrms
Insulation Resistance	
-Initial:	1,000 MΩ Min, @ 500 Vdc
Back EMF (Transient Voltage):	50 Vdc Max.
Input Voltage Range:	20 – 30 Vdc
Operating Current (X1 – X2):	150 mA Max. @ 25°C

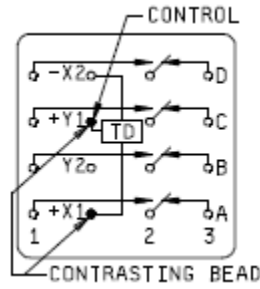
Contact Rating (Amps)

Type of Load (High Level)	Cycles x 10 ³	28 Vdc	115 Vac 400 Hz 1 Phase
Resistive	100	10	10
Inductive	20	8	8
Motor	100	4	4
Lamp	100	2	2

Circuit Diagram



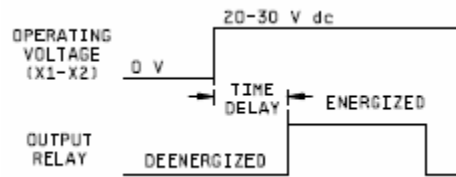
Sheet 35:
REBM410A



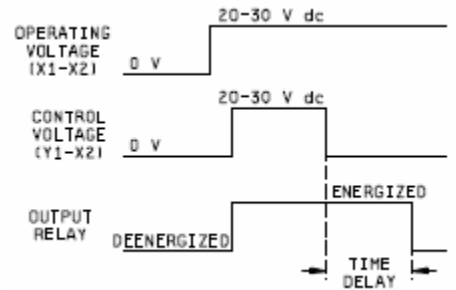
Sheet 36:
REBM410J

Timing Diagram

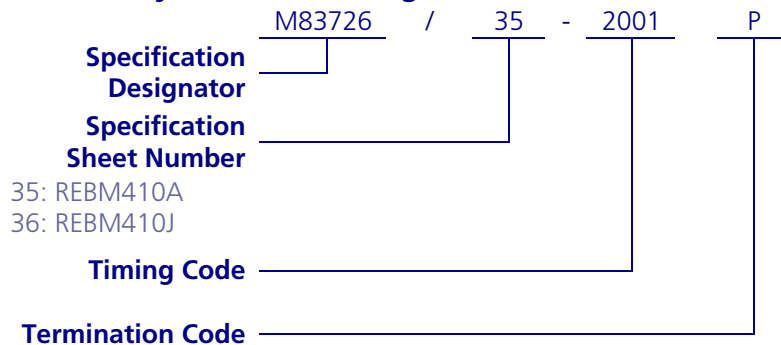
Sheet 35:
REBM410A



Sheet 36:
REBM410J

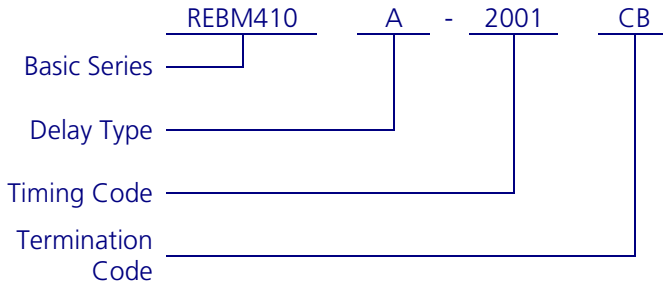


Military Part Numbering



S – Solder Lug
P – Plug In

QPL Part Numbering



Timing Code

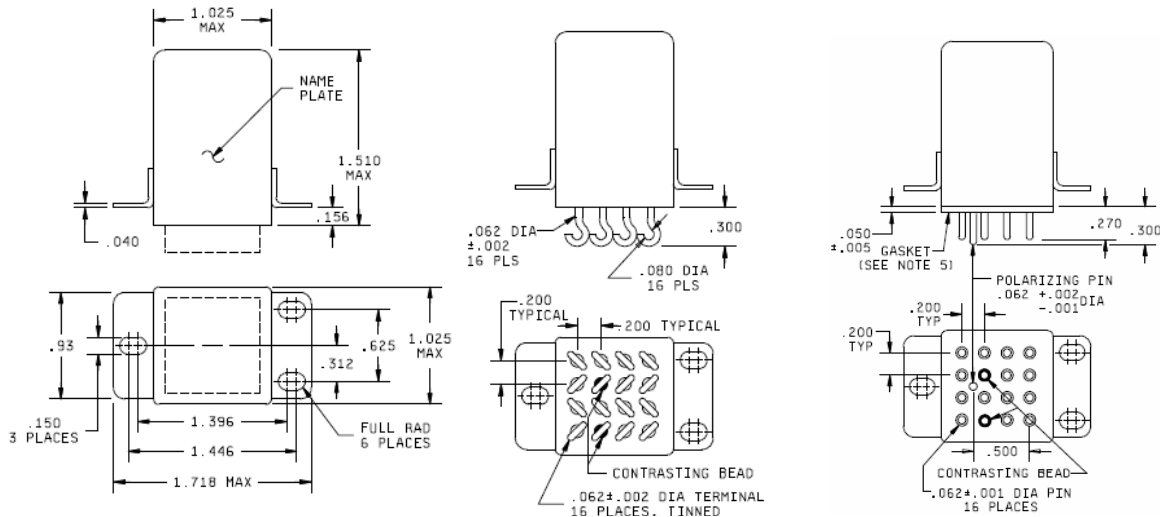
The first three digits are significant; the fourth is the number of zeros to follow the first three digits. The time is expressed in milliseconds and converted to seconds. (See examples)

Examples:

M83726/35-1001P = 100 ms x 10 = 1000 ms = 1 second

M83726/35-9002S = 900 ms x 100 = 90000 ms = 90 seconds

Termination Styles



Termination Code CF:
Solder Lug

Termination Code CB:
Plug in

t